



DECORTENA
EXCLUSIVE 3D PANELS

EXCLUSIVE DECORATIVE PANELS 3D EPS

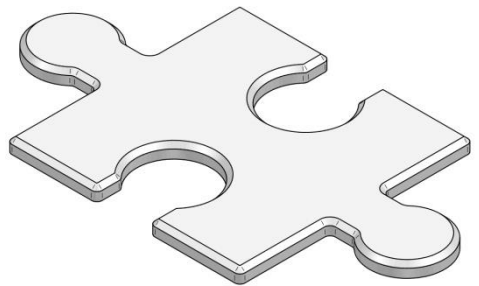
Technical Data Sheet - KTWD/04/2017

Creation date: 19.04.2018

Panel PUZZLE

| General characteristics of the products

Exclusive 3D EPS decorative panels are made from expanded polystyrene (EPS) using technology that enables the production of details of various shapes and any texture of the decorative surface. Decorative panels are made in sizes of 465x265 mm and thickness about 15 mm, packed in 4 pcs. (0,28 m²). Bulk packaging contains 25 cartons, total of 7 m². POLISH PRODUCT.



| Purpose and scope of application

DECORTENA decorative panels are intended for indoor use. Installation of panels to walls or ceilings is done by using commercially available adhesives for Styrofoam. It is recommended to use glue in tube, which provides convenient applying on the panel and then installing to the wall or ceiling. Products are not resistant to organic solvents such as acetone, nitro compounds, petrol, etc. Do not install panels near heat sources.

| Installation instructions

Apply a layer of glue to the smooth surfaces of the panels' contact with the substrate. The substrate, on which the panel will be installed, should be even, dry, free from dust and grease. When installing panels on paint coatings, peel off the paint as well as cracked and fallen plaster. Large surface defects must be filled with spackling paste so that the contact point of the panel with the substrate is smooth.

| Installation of decorative panels

EPS decorative panels allow great freedom of interior design due to easy cutting of shapes with a wallpaper cutter. Panels can be installed in fragments forming protruding motifs on a smooth wall or cover a whole or larger area. To cover the entire surface of the wall, start with one of the corners and arrange the panels in parallel rows. Before installing the first panel, cut off the protruding elements to get a straight vertical edge.

Apply the adhesive only to the back of the panel. When gluing, press the panel firmly, while paying attention to not damage the decorative surface. Panels are designed for painting with water-based paints.

| Storage, transport, safety

Products should be transported and stored in manufacturer's packaging, stored in rooms away from sources of open flames or high temperatures. Each bulk packaging is labelled with at least the following information: manufacturer's name and address, trade name, product symbol.

The product does not require special precautions. The product is not intended for children. Products are recyclable.

| Distributor data

Vertica Łukasz Rutkiewicz

85-758 Bydgoszcz

Przemysłowa 8C

Poland

www.decortena.pl